

L-12, L-18 POUCH MACHINES



- ☐ Film web width of up to 18" (457 mm) can accommodate 4, 6, 8, 9, 10 or 12 packages per cycle.
- ☐ Production output up to 1,200 pouches per minute.
- ☐ Particulates up to 1/2" (12 mm) can be packaged.
- ☐ Hot fill product to 195°F (90°C), with patented "Atmospheric Control" option.
- ☐ Superior fill accuracy with volumetric piston filler. Fill volume range from .05 - 6 fl. oz (1.5 to 178 ml).
- ☐ Front and back registration of packaging material graphics available.



"The Industry Leader In Liquid Packaging Technology"

WINPAK LANE, INC.

THE STANDARD OF THE INDUSTRY



STANDARD SPECIFICATIONS

	L-12	L-18
Film Width (approx.)	12" (305mm)	18" (457mm)
Package Widths (approx.)	3", 2", 1-1/2", (76, 51, 38mm)	4 1/2", 3", 2 1/4", 1 1/2" (114, 76, 57, 38mm)
Package Lengths (min.-max.)	2 1/2" to 6" (64 to 152mm)	2 1/2" to 6" (64 to 152mm)
Packages per cycle	4, 6 or 8	4, 6, 8, 9, 10 or 12
Cycles per minute	15 - 70	15 - 100
Fill Volume Range	.05 - 3fl. oz. (1.5 - 88ml)	.05 - 6fl. oz. (1.5 - 178ml)
Fill Temperature Range	40° - 195°F (4° - 90°C)	40° - 195°F (4° - 90°C)
Amperage @ 220V, 3Ph.	30	60

The Winpak Lane L-12 and L-18 are high-output vertical form-fill-seal pouch packaging machines. This industry workhorse is capable of packaging a wide variety of pumpable products at production rates up to 1,200 packages per minute.

They produce a high integrity sealed pouch by combining two separate rolls of packaging film. Packages of varying widths may be run with the use of appropriate change parts. A twelve-across pattern is the most common for packages with fill weights from 2 to 12g. A six-across pattern is typical for 1 to 2 oz. (28-85g) packages, such as salad dressings. Changeover for different package widths and number of packages across the the web can be made

in one or two hours. Package length can be easily adjusted in minutes.

▶ Package features such as easy-opening notches and perforations, pouring spouts, drip-resistant openings and channels make your packages as "user-friendly" as possible.

▶ Accurately fills products as thin as soy sauce to as thick as peanut butter. The industry standard for dairy, food, cosmetic, pharmaceutical, and industrial products.

▶ "Atmospheric Control" option provides gas-injection for superior hot filling or modified atmospheric packaging.

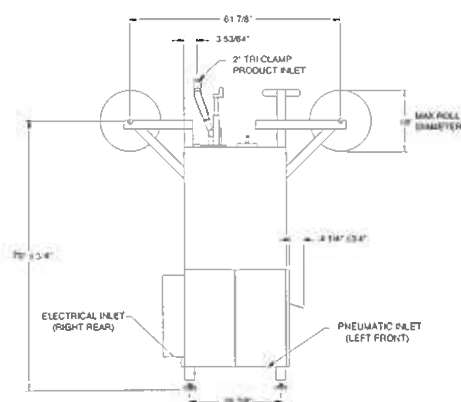
▶ Other options include: large film roll system, front and back registration systems, edge control systems, splice detector, product tanks with controls, diaphragm fillers, clean-in-place

manifolds, embossing code daters, package gate, splash guard, Allen Bradley controller, product weight adjustment while running, and remote emergency stop.

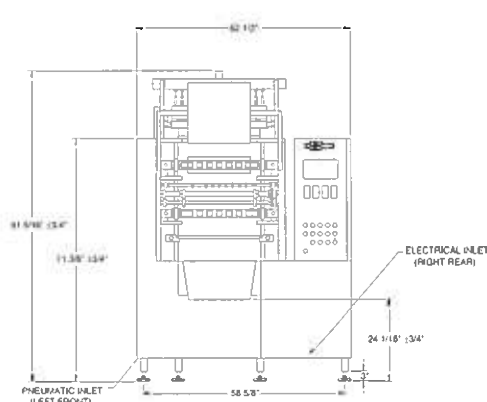
▶ "New - Quick Changeover L-18 Pouch Machine". The Contract Packagers Dream! Using the world's best selling, most reliable pouch machine as a starting point, Winpak Lane's innovators have optimized it for quick changeovers and given it the ability to be precisely tuned to each product produced. This allows the fastest run speeds for each product, repeatability and speed during changeovers using recipes for setting up.

Finally a machine tailored to your contract packaging needs... no more compromises!

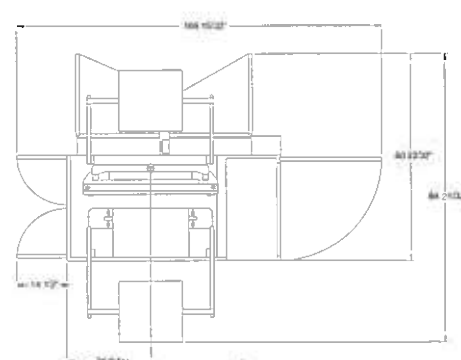
Side View L-18



Front View L-18



Top View L-18



WINPAK LANE, INC.

998 S. Sierra Way, San Bernardino, CA 92408
Tel: (909) 886-0715 Tel: (800) 804-4224 Fax (909) 381-1934